



LeBracs
Rubber



Rubber Hoses

**Slurry Handling &
Dredging Solutions**

ИНЖИНИРИНГ И ПОСТАВКА ТЕХНОЛОГИЧЕСКОГО ОБОРУДОВАНИЯ
Интернет: www.tisys.ru www.tisys.kz www.tisys.by www.tesec.ru www.ти-системс.рф
Телефоны: +7 (495) 7774788, 7489626, 5007155, 54 Эл. почта: info@tisys.ru info@tisys.kz info@tisys.by

Rubber Hoses

LeBracs Rubber has over the years developed an invaluable expertise in developing and supplying high pressure hoses to a wide range of industries at an international level, for installation on projects throughout the world. The LeBracs Rubber Hose range features slurry and mining hoses, dredging hoses and a wide array of preformed bends, compensators and other ancillary items which are manufactured utilizing our in-house state of the art technology which ensures that the hose material is bonded with consistency for maximum reliability for critical applications.

LeBracs Rubber Hoses are designed and manufactured to the highest quality and are supplied to a wide range of industry standards.



Characteristics

The **LeBracs** range of Rubber Hoses exhibit superior wear resistance and extended wear life. This ensures that your repair costs are considerably downsized.

Our entire hose range is supported by our extensive technical and design facilities. This allows for full customization to meet your specific requirements which, in turn, reduces commissioning and installation inadequacies.

Tailor-Made

At **LeBracs Rubber** we work closely with our customers to ensure that they achieve the best hose solution for their project as we understand that each of our customers has exclusive needs and specific requirements. LeBracs Rubber Hoses are tailor-made to any size, with hose diameter of 80 mm to 1000 mm and length up to 11.8 m (max).

LeBracs Rubber hoses are designed to accommodate standard or custom flange types in a variety of compounds and wear liner gauges to best suit the duty. Our hoses are custom manufactured to the scheduled length and engineered to the required pressure.



LeBracs
Rubber

- Easy to fit due to its great flexibility.
- Can be installed by plant personnel, without special training, using simple tools such as an adjustable wrench, knife and hacksaw.
- Can be cut to exact length on site. Available with many inner tube compounds to meet specific material handling requirements.
- Low assembly costs due to short fitting time.
- Reusable couplings keep spare parts costs down
- Elongated holes in the coupling flanges allow the aluminium coupling to be connected to the majority of flanges drilled to conform to international flange standards, such as ANSI, BS, DIN.
- Approximately 5-10 times longer lifespan than steel pipes or PVC tubing.

Dredge Hose



LeBracs Dredging Hoses are specifically designed to deliver optimal suction or discharge in heavy duty dredging.

A specially compounded abrasive resistant rubber hose, suitable for sand & slurry. This hose is manufactured to very close O.D. tolerances and in any size as per the Client's requirement in various lengths and pressure ratings. Liner thickener applies to the inside of the hose as well as the flanges.

Our robust construction is capable of handling the most abrasive material including the corroding effects of marine applications and high abrasive slurries for high pressure application (upto working pressure of 15-20 bar)

Suction Dredge Hose and Sleeves

This type of slurry hose is very well suited to be used for very abrasive and sharp edge solids like blasted or precut rock. Reinforced with multiples plies of high tensile cord fabric suitably impregnated with Rubber. Discontinuous steel rings are provided to take care of suction, crush resistance, and avoid kinking and to improve the sturdiness of the hose. Abrasion resistant, Weather resistant, Sea Water resistant rubber specially developed compounded outer layer. Mostly used with these hoses are having rubber flange/steel backing flange and the Double Action flange. They can be supplied in any size, and depending upon application, with 100% vacuum capability and high implosion pressures.





Compensators

LeBracs Rubber Compensators combine elastic properties of rubber compounds with various types of reinforcement to provide a flexible pipe joint. These are used to eliminate vibrations, noise, compensate for misalignments and length deviations.



Soft Wall Hose

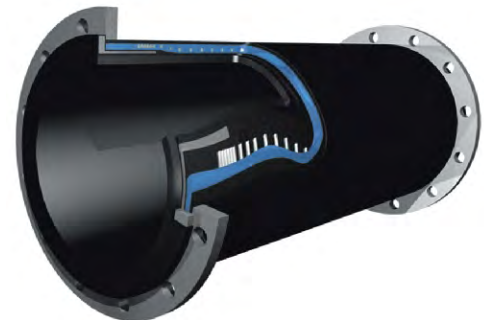
LeBracs Rubber Soft Wall hoses offer adequate flexibility and are preferred in applications where frequent movement is involved. The non-wire construction reduces the rate of internal damage caused by excessive bending.

Hard Wall Hose

These hoses are manufactured with a heavy spring steel wire helix, designed to cater to high dynamic loads, giving them a robust construction for suction and discharge applications.

The LeBracs Hard Wall hoses are designed for the most arduous mining and industrial environments, hence this range of hose can also be adapted for aggressive chemical or acid applications through the addition of LeBracs range of rubber liners.

LeBracs Hard Wall hoses can be custom made to any size as per the customer's requirement and are also available with a wide range of flanges.





LeBracs
Rubber

Endcut Hose



The EndCut Hose arrangement is designed as a ready to use hose system developed to minimize both down time and maintenance costs. Combining the outstanding abrasion resistance of the hose tube with lightweight reusable aluminium flanged couplings, this unique combination allows fast and easy on site assembly.

The hose coupling system is not exposed to the material flow and is therefore suitable for abrasive and corrosive duties. The couplings are available with standard bolt patterns in aluminum and accommodate standard industry operational pressures.

Preformed Bends

LeBracs Rubber Preformed Bends are applied where space restrictions demand a much sharper bend radius than can be achieved using a Hard Wall hose.

LeBracs Rubber offers Preformed Bends in an extensive array of diameters, bend angles and radii configuration as per the customer's requirement which are designed to offer superior wear performance over normal hoses and steel lined pipes.



TYPES OF FLANGES/END CONNECTIONS

Fixed Flange Type

LeBracs Rubber Soft Wall hoses offer adequate flexibility and are preferred in applications where frequent movement is involved. The non-wire construction reduces the rate of internal damage caused by excessive bending.

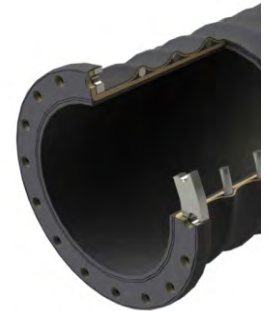


Reusable Flanged Couplings

The reusable flanged couplings are designed to be used with Lebracs Rubber EndCut hose. Elongated holes in the coupling flanges allow the aluminium couplings to be connected to the majority of flanges drilled to conform to international flange standards, such as ANSI, BS, and DIN. Since the coupling has no contact with the internal hose flow, it is highly suitable for abrasive slurries.

Standard Flange Type

Standard Flanges are fully rubberized, built-in flanges that are available in Swivel or Fixed Flange configurations. Standard Flanges are mainly used in dredging and high performance/pressure slurry applications.



Gaskets

The **LeBracs Rubber** Conical Gasket is designed for use with the LeBracs range of hoses, bends and other ancillary items. LeBracs Rubber Conical Gaskets are steel reinforced. These gaskets allow turbulence free passage and are the same size as the inner diameter of the hose. The conical shape compensates for irregularities in the hose ends. Grooves at the front eliminate the risk of leaks. Together with the LeBracs Rubber Range of Flanges & Couplings, the gasket ensures a completely sealed connection while retaining full inner diameter.

LeBracs Rubber Linings Private Limited

Rubber Sheets
Rubber Hoses

